



LOCATION

La Meridiana is located in the heart of Tuscany, one of the most beautiful regions in Italy and the centre enjoys beautiful views of the surrounding country side. It is 8 kilometers away from the medieval town of Certaldo which has retained its authenticity as a small Tuscan town, yet provides a wide array of shopping, dining, and entertainment.

The cities of Florence and Siena are both within an hour of La Meridiana and other intriguing Tuscan towns such as San Gimignano, Volterra and Greve in Chianti are a short drive away. The heart of the Chianti region lies just to our east, and Milan and Rome are both easily accessible by train or car.



HOW TO GET THERE

Participants in our ceramic courses are categorically asked to arrive between 3:00 and 7:00 p.m. on Sunday at the start of their course. If arriving by car from the A1 Autostrada, exit at Firenze-Certosa and take the toll-free motorway to Siena. From the motorway, exit at Tavarnelle Val di Pesa and follow signs for Barberino Val d'Elsa. Just past the village of Barberino, take to the right and follow the signs for Certaldo. After 8 km, passed Bagnano turn right at the La Meridiana signpost. If arriving from Certaldo, follow signs to Barberino Val d'Elsa. After 7 km, passing through Sciano, turn left at the La Meridiana signpost.

If by train, from Florence's main station, Santa Maria Novella, take a local train to Siena and get off at the Certaldo stop. On the Sunday of your arrival, one of our cars will be waiting for you at 6:00 p.m. at the train station.



LA MERIDIANA

Bagnano 135 - 50052 Certaldo (Fi) Italia
Tel. & Fax +39 0571 660084
www.lameridiana.fi.it - pietro@pietro.net



LA MERIDIANA Ceramics in Tuscany





OUR GOAL

As La Meridiana has grown throughout the years, its goal has grown as well. One simple vision still remains, and that is to offer to our patrons a facility dedicated to a continual education in the ceramic art and rich in Italian culture. We would simultaneously like to provide a creative stimulus to modern ceramic artists in Italy. In providing this meeting ground of cultures and artists, our hope is to develop artistic creativity in clay through a continuous exchange of ideas, skills, philosophies and techniques.

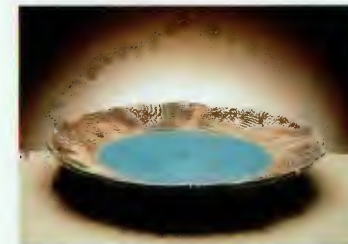


WORKSHOPS & SEMINARS

La Meridiana has been offering workshops since 1981. Originally it operated only in the summer offering courses to students coming from Italy and Europe. Now we have a variety of different initiatives embracing most of the year with students and artists coming from around the world. The courses range from beginners to more advanced and technical courses. Both one and two week courses are scheduled. Special two days Seminars are normally offered on week ends. Some of the instructors are members of our teaching staff here at La Meridiana and live in Italy. Many are from other countries and cultures and this gives participants a great opportunity to develop their ideas and skills. Included in the cost of every course is a full gourmet lunch every working day, lodging in a restored farmhouse, studio supplies and firings. All of our courses begin on Sunday evening with a group meal at our local restaurant in Bagnano, and during the week several outings to the town of Certaldo are provided in order to buy groceries and other necessities. The course then ends on Saturday mid morning.

CLAY GROUPS

Recently, La Meridiana has opened its doors to pre-organized groups aimed at providing special instruction from a well-known professional ceramic artist. The groups typically enjoy short excursions to some of the main attractions in beautiful Tuscany to compliment their daily work in the studio. Most groups are organized by the teacher or agency then La Meridiana will provide the facility, assisting teachers, travel information, and general organization.



RESIDENCIES

La Meridiana has been continually developing a residency program for advanced or professional artists who want to explore individual ideas in a fully-equipped studio away from home. Fees include rent for apartments, studio space and technical assistance from our staff. Firing and clay costs will be determined on an individual basis. Residencies are available during the winter months



FACILITIES

The studio is on the ground floor of a restored 13th century farmhouse and offers space for all types of ceramic experimentation. Our kilns range from high-fire gas, raku, soda, and wood firing to lower-fired electric, pit, and smoke. Our staff is all practicing ceramic artists as well as fluent English speakers. Living accommodations are also provided within walking distance to the studio, include kitchen and bath and general gathering spaces. A typical Tuscan lunch is served every day during our courses, and transportation to nearby Certaldo is provided on various occasions. Telephone and internet access are also available.

